

## 2009 Penguins



Jordan Ingalls **1**



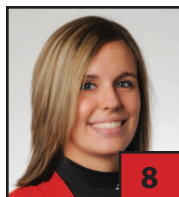
Kristina Rendle **2**



Haley Thomas **3**



Tasha Hess **4**



Kristina Davidson **8**



Danielle Chase **10**



Cheryl Cale **11**



Erin Schindler **12**



Autumn Grove **13**



Amanda Palmore **14**



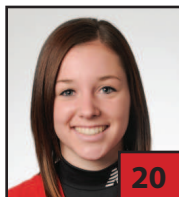
Allyse Ledford **15**



Kim Klonowski **17**



Melanie Conklin **18**



Kristen Philen **20**



Jessica Sciacca **22**



Brian Campbell



## 2009 Schedule

Date	Opponent	Time
2/21	at George Mason (DH)	11 a.m.
2/22	at George Mason (DH)	10 a.m.
3/7	vs. Holy Cross <sup>^</sup>	9 a.m.
3/7	vs. Saint Francis (Pa.) <sup>^</sup>	11 a.m.
3/8	vs. South Dakota <sup>^</sup>	9 a.m.
3/8	vs. Maine <sup>^</sup>	11 a.m.
3/9	vs. IPFW <sup>^</sup>	1 p.m.
3/9	vs. Penn <sup>^</sup>	5 p.m.
3/11	vs. SIU-Edwardsville <sup>^</sup>	9 a.m.
3/11	vs. IPFW <sup>^</sup>	1 p.m.
3/12	vs. South Dakota <sup>^</sup>	3 p.m.
3/12	vs. Yale <sup>^</sup>	5 p.m.
3/13	vs. Bryant <sup>^</sup>	3 p.m.
3/13	vs. LaSalle <sup>^</sup>	5 p.m.
3/21	<b>LOYOLA*</b>	<b>1 p.m.</b>
3/21	<b>LOYOLA*</b>	<b>3 p.m.</b>
3/22	<b>LOYOLA*</b>	<b>11 a.m.</b>
3/25	<b>MOREHEAD STATE</b>	<b>3 p.m.</b>
3/25	<b>MOREHEAD STATE</b>	<b>5 p.m.</b>
3/26	at Canisius	3 p.m.
3/26	at Canisius	5 p.m.
3/28	at Wright State*	1 p.m.
3/28	at Wright State*	3 p.m.
3/29	at Wright State*	Noon
4/1	<b>DETROIT*</b>	<b>5 p.m.</b>
4/1	<b>DETROIT*</b>	<b>7 p.m.</b>
4/2	<b>DETROIT*</b>	<b>1 p.m.</b>
4/4	at UIC*	2 p.m.
4/4	at UIC*	4 p.m.
4/5	at UIC*	1 p.m.
4/7	<b>ROBERT MORRIS</b>	<b>2 p.m.</b>
4/7	<b>ROBERT MORRIS</b>	<b>4 p.m.</b>
4/8	<b>TOLEDO</b>	<b>3 p.m.</b>
4/8	<b>TOLEDO</b>	<b>5 p.m.</b>
4/10	<b>VALPARAISO*</b>	<b>5 p.m.</b>
4/11	<b>VALPARAISO*</b>	<b>11 a.m.</b>
4/11	<b>VALPARAISO*</b>	<b>1 p.m.</b>
4/17	at Cleveland State*	5 p.m.
4/17	at Cleveland State*	7 p.m.
4/18	at Cleveland State*	2 p.m.
4/21	<b>AKRON</b>	<b>3 p.m.</b>
4/21	<b>AKRON</b>	<b>5 p.m.</b>
4/23	at Saint Francis (Pa.)	3 p.m.
4/23	at Saint Francis (Pa.)	5 p.m.
4/25	at Butler*	1 p.m.
4/25	at Butler*	3 p.m.
4/26	at Butler*	Noon
4/28	at Niagara	3 p.m.
4/28	at Niagara	5 p.m.
4/29	<b>PITTSBURGH</b>	<b>3 p.m.</b>
4/29	<b>PITTSBURGH</b>	<b>5 p.m.</b>
5/2	<b>GREEN BAY*</b>	<b>1 p.m.</b>
5/2	<b>GREEN BAY*</b>	<b>3 p.m.</b>
5/3	<b>GREEN BAY*</b>	<b>11 a.m.</b>
5/7-9	at Horizon League Tournament	TBA

\* - Horizon League games.

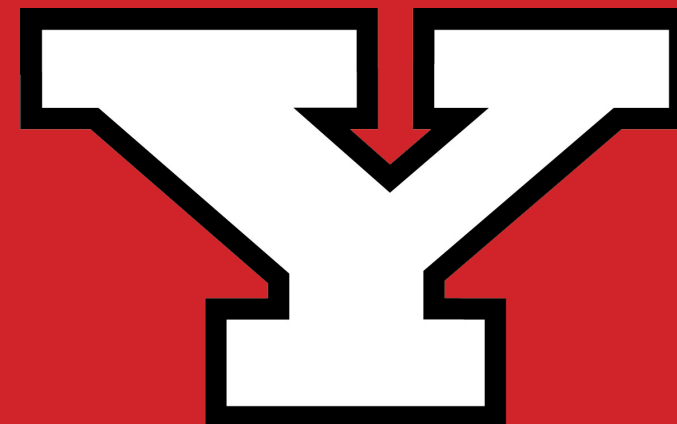
<sup>^</sup> - Rebel Games in Orlando, Fla.

Bold and Caps indicates home games at McCune Park.

## 2009

# YOUNGSTOWN STATE

## SOFTBALL



## Gold Glove Club

A New Attitude

A New Philosophy

And

A Great Desire to Win

**A Special Invitation for you  
to join the**

**YOUNGSTOWN STATE SOFTBALL**

# Gold Glove Club

The Youngstown State Softball Team would like to invite you to join the new and exciting Gold Glove Club. The Gold Glove Club will be taking the place of the Dugout Club and 100-inning game. Youngstown State Softball 2009 has a new look, a new attitude, a new philosophy and a great desire to win. By joining the Club, you will play a major roll in helping us accomplish our goal.

The 2009 YSU Softball Team will have one of the most challenging seasons in school history. Throughout the 2009 season, we will play many Mid-American Conference schools along with teams in the Big East. Combined with the always competitive Horizon League, every game will be important. This fall, we started our journey toward our goal by compiling a 6-2 record. We will start our regular season at the end of February by traveling to George Mason University in Washington D.C. YSU Softball will be renewing our annual trip to the Rebel games in Florida in early March. This will give us a chance to have Spring Training before league play. Within a 10 week period, we will play 56 games.

By joining the Gold Glove Club, you will be giving us the resources to purchase equipment, uniforms and cover a portion of our travel expenses. Please review our different membership opportunities and talk to your accountant about deductible contributions. For each donation, you will receive a gift in appreciation from the YSU Softball Family.

**2009 YSU SOFTBALL**

**GOLD GLOVE CLUB**

**MEMBERSHIP  
OPPORTUNITIES**

**G \$25.00**

- Gold Glove Newsletter, 2009 YSU Softball Picture
- Move up to \$50.00 and your name will be placed in a Drawing to win a \$100.00 Gift Card

**O \$50.00**

- Gold Glove Newsletter, 2009 YSU Softball Picture
- New Balance YSU Shirt

**L \$150.00**

- Gold Glove Newsletter
- YSU 2009 Softball Picture
- YSU Softball New Balance Polo Shirt

**D \$250.00**

- Gold Glove Newsletter
- YSU 2009 Softball Picture
- New Balance YSU Softball Wind Breaker Pullover

**Major Gold Glove Contributor**

- \$500 and over
- YSU Pete the Penguin Clock
- Gold Glove Newsletter
- YSU 2009 Softball Picture
- YSU Softball New Balance Polo Shirt
- YSU Softball New Balance Wind Breaker Pullover

**\*\*The Gold Glove Newsletter will be sent  
by e-mail only.\*\***

## 2009 Youngstown State Softball Pledge Card

Name	Player #
Spouse	
Street Address	
City	State Zip
Home Phone	Work Phone
Email	Fax
2009 Membership Level	Amount
Charge: <input type="checkbox"/> Visa <input type="checkbox"/> MC <input type="checkbox"/> Discover	Account
Size: <input type="checkbox"/> S <input type="checkbox"/> M <input type="checkbox"/> L <input type="checkbox"/> XL <input type="checkbox"/> XXL	Exp.
Signature:	

Mail to: Youngstown State Ticket Office • One University Plaza • Youngstown, Ohio 44555  
Make Checks Payable to YSU Softball (memo: Penguin Club)